



HYUNDAI Technical Service Bulletin

Group	ELECTRICAL
Number	09-BE-022
Date	SEPTEMBER, 2009
Model	AZERA (TG) (2006~2007)

Subject
REAR POWER SUNSHADE ABNORMAL NOISE OR BINDING

CIRCULATE TO:	<input type="checkbox"/> GENERAL MANAGER	<input checked="" type="checkbox"/> PARTS MANAGER	<input checked="" type="checkbox"/> TECHNICIAN
<input checked="" type="checkbox"/> SERVICE ADVISOR	<input checked="" type="checkbox"/> SERVICE MANAGER	<input checked="" type="checkbox"/> WARRANTY MGR	<input type="checkbox"/> SALES MANAGER

This bulletin supercedes TSB 07-90-004

DESCRIPTION:


The Azera rear power sunshade may experience abnormal noise/binding or shaky arms during operation. This bulletin describes the service procedures that correct the condition. The gear replacement and arm stud bolt repair applies to all affected vehicles.

This bulletin describes the procedures for the gear replacement and arm stud bolt repair.

APPLICABLE VEHICLES:

- Model: AZERA (TG) (2006~2007) with rear power sunshade
- Applicable vehicle production date range: From July 23, 2005 to December 31, 2006

PARTS REQUIRED:

PART NAME	PART NUMBER	PROCEDURE	PHOTO
PA46 REAR CURTAIN MOTOR PLASTIC GEAR & SCREW	856903L114FFF	FOR GEAR REPLACEMENT	
THREAD LOCKER APPLICATOR	856903L113FFF	FOR ARM STUD BOLT REPAIR	
THIN WRENCH*	85690-3L111FFF		

NOTE: *Use Thin Wrench that is directly shipped to dealers from HMA for T87 campaign.

SERVICE PROCEDURE:

- Using the procedure provided in the Azera Shop Manual, remove the rear sunshade assembly from the vehicle.
- Place the assembly on a flat work surface and extend the shade to approximately 50% of its full travel by using a 12v battery or 12v power supply connected to the motor leads as follows:
 - (+) to the motor red wire and (-) to the motor black wire to extend the shade.
 - (-) to the motor red wire and (+) to the motor black wire to retract the shade.





HYUNDAI Technical Service Bulletin

Group

ELECTRICAL

Number

09-BE-022

NOTE: The motor gears are held under tension by an internal spring. Extending the shade to approximately 50% of it's full travel will release the tension from the spring and ease removal and installation of the gears.

NOTE: Care should be taken to avoid damaging or staining the sunshade fabric while extended.

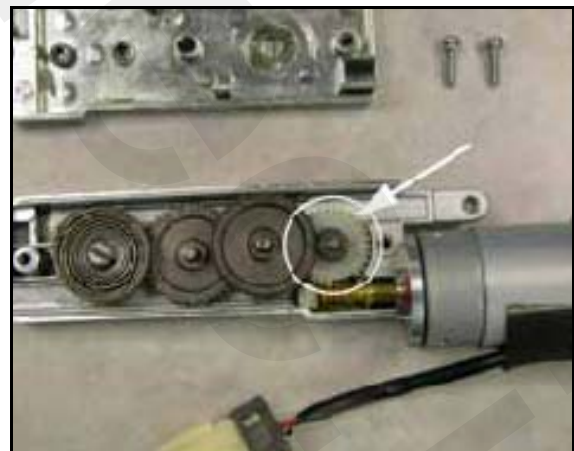


3. Begin disassembly of the motor gear box by using a heat gun to soften the thread locker used to retain the (2) screws. Heat should be applied to the (2) screws and the immediate surrounding area at least for 40 seconds to ensure the screws are free from thread locker material.

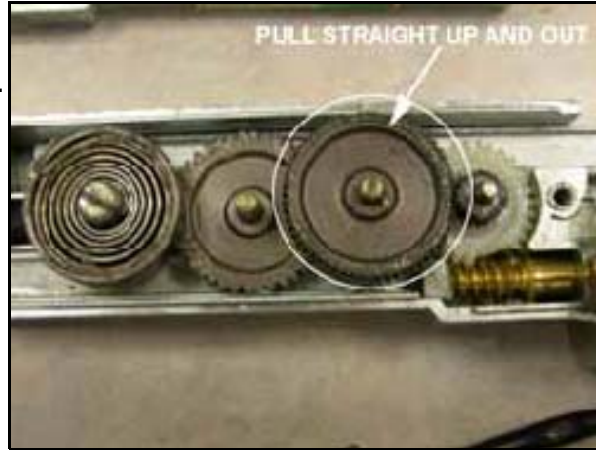
NOTE: The motor gear box has been removed from the sunshade assembly for illustrative purposes only. It is NOT necessary to remove the motor gear box from the sunshade assembly for this procedure.



4. Remove the motor gear box top cover and locate the plastic drive gear attached to the brass worm gear as shown.



5. Remove the 2nd drive gear to access the plastic drive gear as shown. Gear is removed by pulling it straight up and out.



6. Remove the old plastic gear by pulling it straight up and out.





HYUNDAI Technical Service Bulletin

Group

ELECTRICAL

Number

09-BE-022

7. Apply a small amount of assembly lube or grease to the new plastic gear (p/n 85690-3L114FFF) and install it as shown.



8. Re-install the 2nd drive gear as shown.

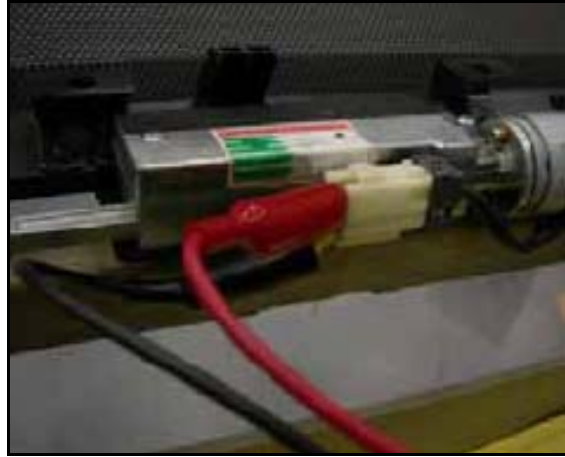


9. Ensure that all gears are properly meshed and re-assemble the motor gear box in the reverse order of installation.

NOTE: A non-permanent thread locking compound should be used on the (2) motor gear box enclosure retaining screws.

10. Place the assembly on a flat work surface and extend the shade to 100% of it's full travel by using a 12v battery or 12v power supply connected to the motor leads as follows:

- (+) to the motor red wire and (-) to the motor black wire to extend the shade.
- (-) to the motor black wire and (+) to the motor red wire to retract the shade.



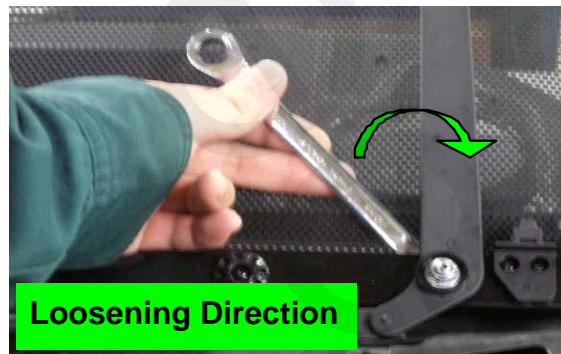
NOTE: Care should be taken to avoid damaging or staining the sunshade fabric while extended.



11. Press the outer nut of the motor arm stud as shown in the photo. If the revealing gap shows less than 2-3 threads, use the thin wrench to loosen the inner nut, until revealing 2-3 thread space. In the meantime, you still have to press the outer nut as photo shows.



NOTE: If the revealing gap already shows more than 2-3 threads, please skip this step.





HYUNDAI Technical Service Bulletin

Group

ELECTRICAL

Number

09-BE-022

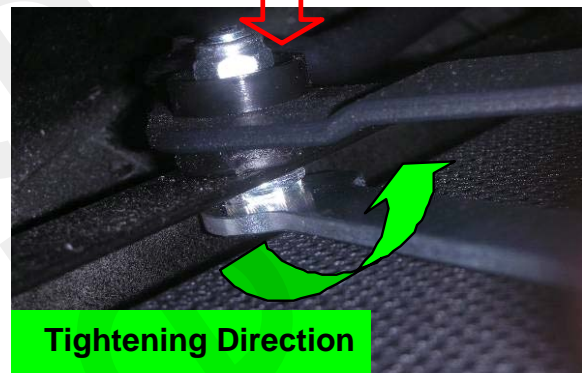
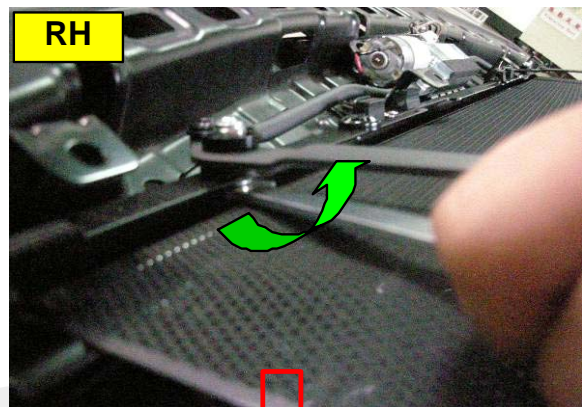
12. Press the outer nut, and inject thread locker on stud bolt revealing threads.

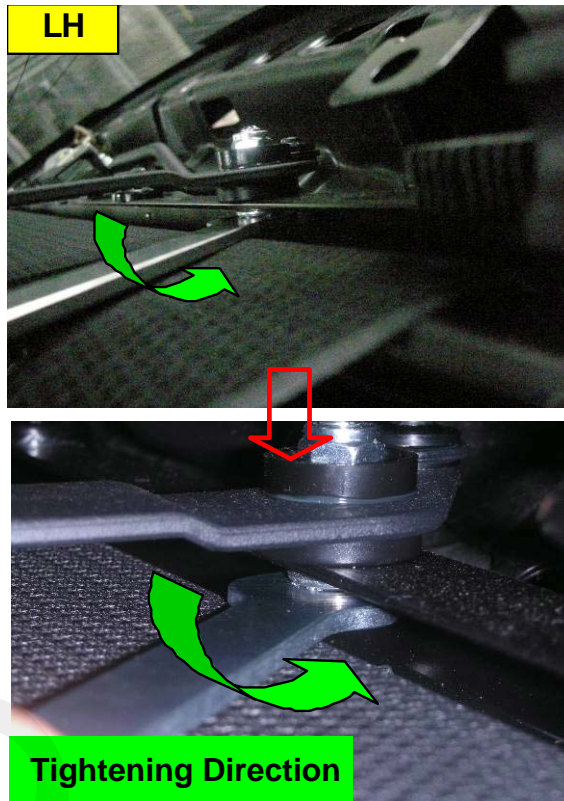
NOTE: Care should be taken to avoid damaging or staining the sunshade fabric with the thread locker while extended.



13. Tighten the inner nut on the stud bolt and operate the sunshade around 5 times.

NOTE: Please inform customers to not operate the rear sunshade for a least 24 hours to allow the thread locker to dry completely.





GEAR REPLACEMENT & ARM STUD BOLT REPAIR COMPLETION

- Re-install the sunshade assembly into the vehicle in the reverse order of removal.
- Test the sunshade for proper operation.
- Procedure complete.

WARRANTY INFORMATION:

OP CODE	OPERATION	OP TIME	Causal P/I	NATURE	CAUSE
85690F00	REAR CURTAIN MOTOR PLASTIC GEAR REPLACEMENT & ARM STUD BOLT REPAIR	1.1 M/H	85690-3L000	*N29	**C63